

# Automate Firewall Rule Cleanup

## Overview

Tufin centralizes the management of network security enforcement points and compliance reporting across your hybrid network.

It gives you a holistic view into your rule bases across all major firewalls—on premises and in the cloud—allowing you to automatically find and remove unused, expired and shadowed rules from thousands of firewalls safely.

**Decommissioning 18k redundant rules in one day?**  
A large U.S. FinServ company did just that.

### KEY FEATURES:



Automated rule cleanup.



See policy hygiene trends over time.



Disable rules prior to decommissioning to avoid causing outages.



Every change is documented providing more granular audit reporting.

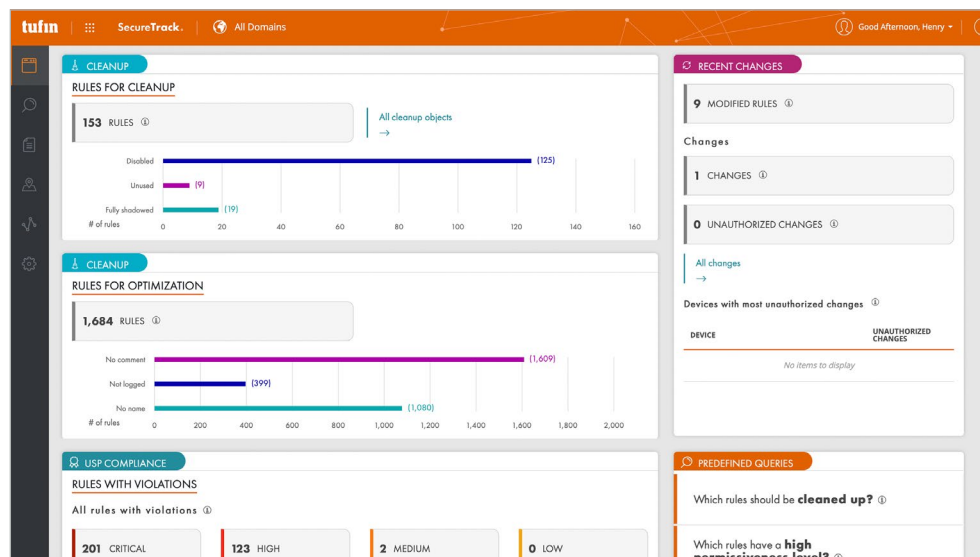
## Benefits

- Dramatically reduce attack surface.
- Save thousands of hours per year.
- Minimize firewall management complexity, increasing agility.
- Prep for audits in hours, not weeks.

## Save Time. Improve Security Posture.

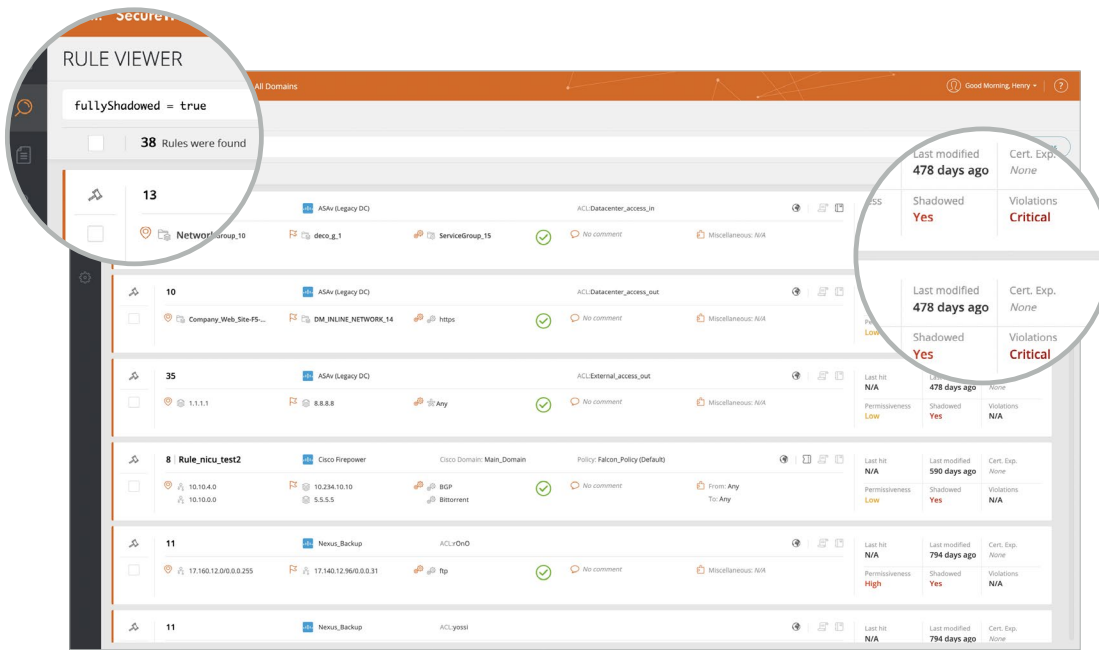
Get real-time visibility into unused, shadowed, redundant and overly permissive rules and take advantage of automatic rule decommissioning. Tufin clients have reduced cleanup time by 80%.

[\(See Case Study: Large Utilities Company\)](#)



**“We save countless hours on rule cleanup and compliance reporting, and we can give management visibility without pulling one of our valuable team members from critical tasks.”**

— Cybersecurity Manager,  
Large U.S. Utilities Company



Users can drill down from the home dashboard to the Rule Viewer, which makes it easy to identify rules for cleanup. For example, you can filter to isolate shadowed or unused rules, or overly permissive rules. From here you can select rules for removal, which automatically kicks off a decommissioning workflow, creating a ticket to be handled by the appropriate team.

## Automatic Identification and Decommissioning of Unused Network Objects

Tufin can automatically identify and remove duplicate, unused, or empty network groups and objects (such as hosts, networks, or services), significantly reducing the complexity of managing a large enterprise network.

Users can elect to disable rules for a period of time prior to decommissioning to ensure that removal will not cause an outage.

## Automated Workflows for Cleanup

Tufin's customizable change workflows allow enterprises to automate the design, risk assessment, provisioning, and verification of cleanup activities, such as rule decommissioning and rule modification.

These workflows allow enterprises to choose the level of cleanup automation that is right for them, with approvals and manual oversight injected at key steps, as required.

Automating the design and provisioning of cleanup activities not only saves time, it reduces errors and application downtime. Automated risk assessments ensure that no additional risk is unintentionally introduced through policy changes, and compliance is maintained.

Every step in the change process is fully documented, allowing instant audit of any change for compliance or in the event that a change must be rolled back. Tufin's automated workflows make the design, approval and provisioning of cleanup tasks fast and easy at scale.

